



Steppe Sweet Pea

The Steppe Sweet Pea brings two-story light-filled height to a floor plan that clearly separates “Great Room” living from the upper-level bedroom/office loft. The narrow rectangle floor plan stacks many convenient features such as an entry closet and full size bathtub, into a surprisingly small space.

The modern feel of this house is accentuated by large windows including a window seat alcove tucked in off the side of the stairs - a comfy reading or contemplation space. Views from both floor levels connect the interior to the outdoors.

A special aspect of Inversion ADUs is the balance of construction time, cost, and quality through our panelized construction method. Panels are fabricated in a climate-controlled facility and then brought to the site, which minimizes on-site disruption time for homeowners and allows for a high level of quality assurance through the integration of the design during construction. The result is an excellent product both in the initial finish and over the lifetime of the building.

Durability, energy efficiency and environmentally friendly materials provide life-long advantages. Exterior and interior materials have been selected for their useful performance as well as pleasing appearance. Your Inversion ADU is very well insulated, staying warm in the winter and cool in the summer while using minimal electricity. Electricity usage can be offset with optional solar panels. Good ventilation and careful finish material selections create a healthy indoor air quality. All these features combine to ensure that your ADU remains an asset for generations.

FEATURES

- 510 Square Feet
- 1 Bedroom
- 1 Bath
- Vaulted Ceiling
- Solar Panel Ready
- Insulation Exceeds Energy Code
- Integrated Air Filtration System

PRICING

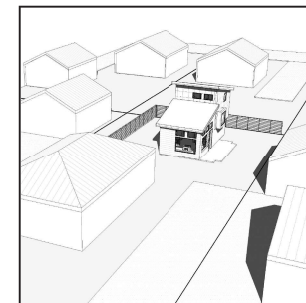


inversiondesignbuild.com
or email
info@inversiondesignbuild.com

* Price is for a standard unit on an owner occupied site

OPTIONS

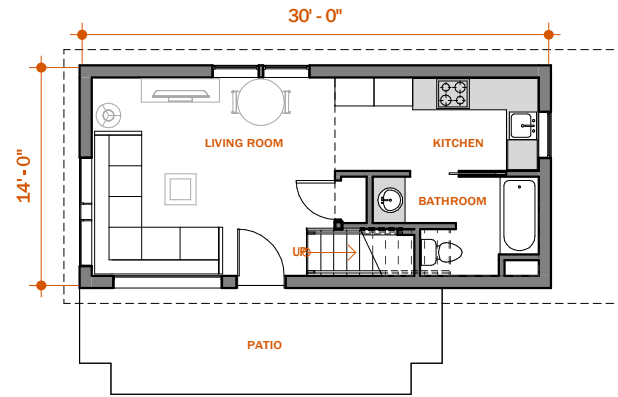
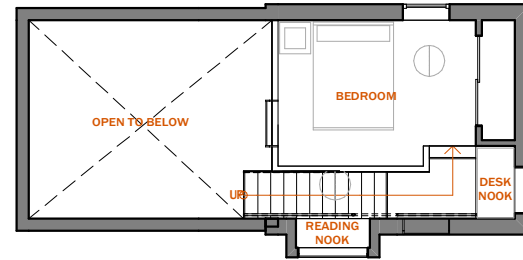
- Solar Panels
- Kitchenette
- Heat Pump



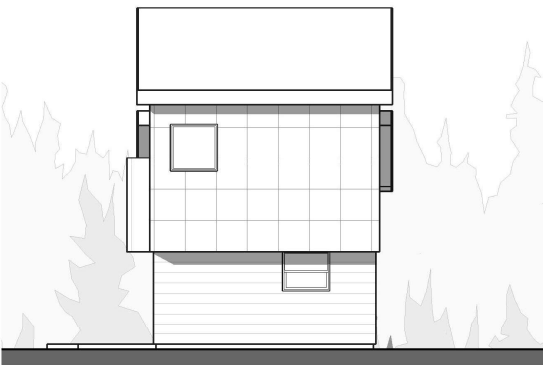
STEPPE SWEET PEA
1 BEDROOM



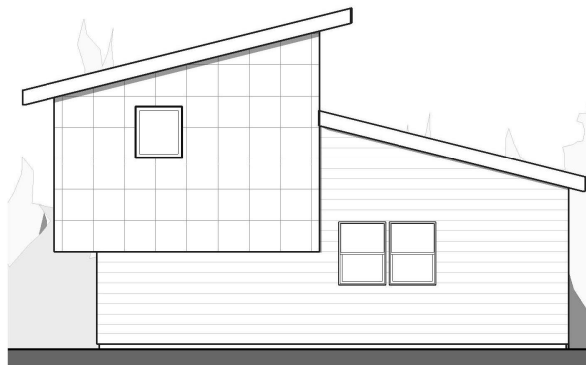
LEFT SIDE



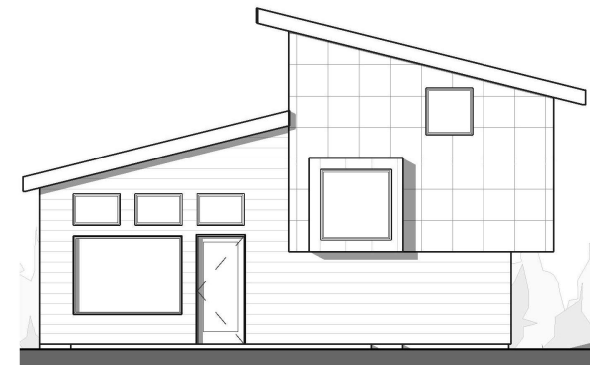
FLOOR PLAN



RIGHT SIDE



BACK



FRONT

STEPPE SWEET PEA 1 BEDROOM