



## Desert Paintbrush

The Desert Paintbrush opens up creative possibilities for guests, family, office use, caregivers to have privacy and the comforts of home within a very tight footprint, about the size of a single-car garage. Sliding glass doors open the interior space to outdoor living; the high ceiling slopes with the house's contemporary roof line. Windows on two exterior walls provide natural cross-ventilation and augment connection to the backyard landscape. The kitchen is fully capable of helping you cook meals, barbeque snacks or just morning coffee. The kitchen's range can be removed if the Desert Paintbrush becomes a non-ADU "guest house/detached bedroom" as defined in the zoning ordinance of the site's locale.

A special aspect of Inversion ADUs is the balance of construction time, cost, and quality through our panelized construction method. Panels are fabricated in a climate-controlled facility and then brought to the site, which minimizes on-site disruption time for homeowners and allows for a high level of quality assurance through the integration of the design during construction. The result is an excellent product both in the initial finish and over the lifetime of the building.

Durability, energy efficiency and environmentally friendly materials provide life-long advantages. Exterior and interior materials have been selected for their useful performance as well as pleasing appearance. Your Inversion ADU is very well insulated, staying warm in the winter and cool in the summer while using minimal electricity. Electricity usage can be offset with optional solar panels. Good ventilation and careful finish material selections create a healthy indoor air quality. All these features combine to ensure that your ADU remains an asset for generations.

### FEATURES

- 238 Square Feet
- Studio
- 1 Bath
- Vaulted Ceiling
- Type B Accessible
- Solar Panel Ready
- Insulation Exceeds Energy Code
- Integrated Air Filtration System

### OPTIONS

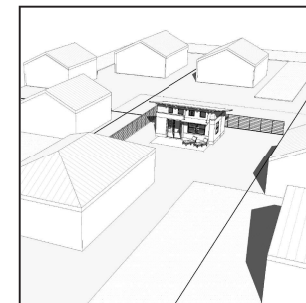
- Lorem ipsum dolor sit amet, consectetur adipiscing
- Type A Accessible
  - Solar Panels
  - Kitchenette
  - Heat Pump

### PRICING



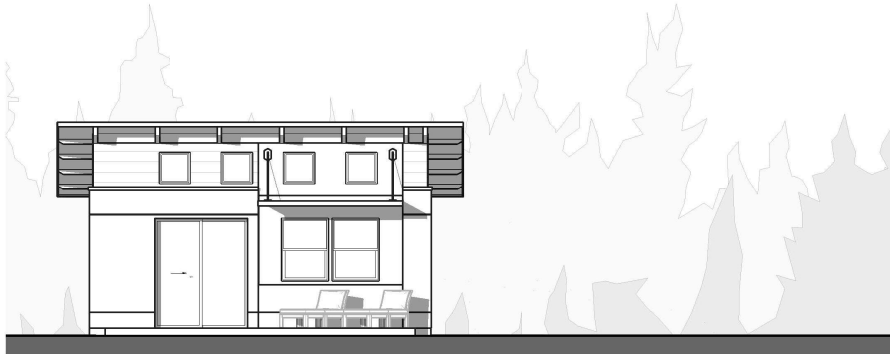
inversiondesignbuild.com  
or email  
info@inversiondesignbuild.com

\* Price is for a standard unit on an owner occupied site

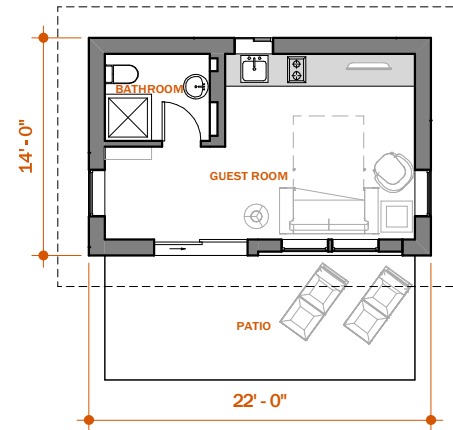


DESERT PAINTBRUSH  
STUDIO

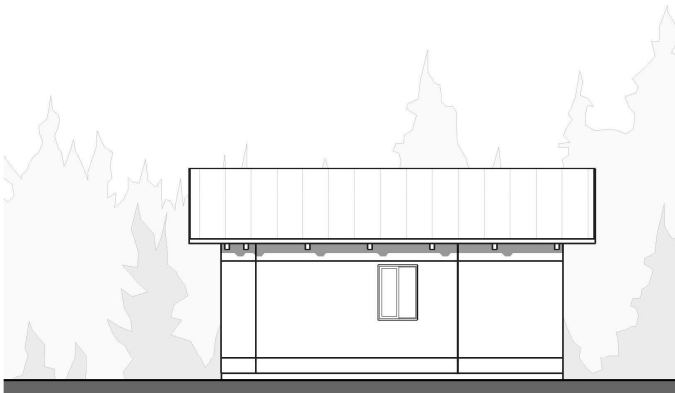
# DESERT PAINTBRUSH STUDIO



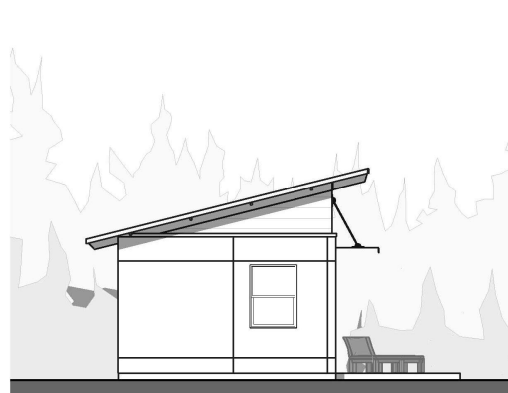
**FRONT**



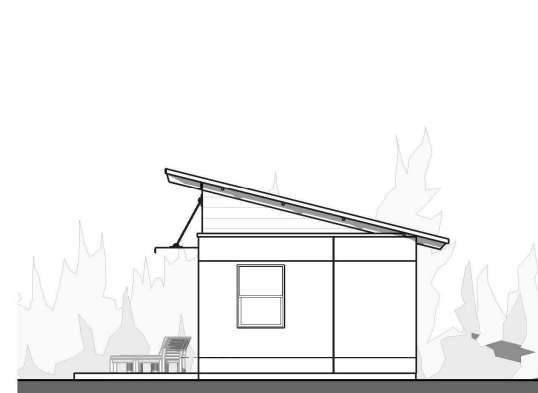
**FLOOR PLAN**



**BACK**



**LEFT SIDE**



**RIGHT SIDE**