



## Hardy Lupine

The Hardy Lupine is a cozy house for family and guests to call home, with a comfortable floor plan and covered entry patio. Within 465 square feet, its compact footprint has a complete kitchen, bathroom, and private bedroom and can be placed in the context of a smaller scale back yard.

The living area has a vaulted ceiling, numerous windows, and a window seat sized for a twin mattress for flexibility in use. The open floor plan ties the kitchen space to the living room, making it both functional and enjoyable to use. An option for built-in furniture holds a barstool counter and TV platform with storage underneath. A deep bedroom closet and room for a queen-sized bed and stacking washer/dryer address day to day livability. The Hardy Lupine is Type B accessible and can be readily adapted for full accessibility.

A special aspect of Inversion ADUs is the balance of construction time, cost, and quality through our panelized construction method. Panels are fabricated in a climate-controlled facility and then brought to the site, which minimizes on-site disruption time for homeowners and allows for a high level of quality assurance through the integration of the design during construction. The result is an excellent product both in the initial finish and over the lifetime of the building.

Durability, energy efficiency and environmentally friendly materials provide life-long advantages. Exterior and interior materials have been selected for their useful performance as well as pleasing appearance. Your Inversion ADU is very well insulated, staying warm in the winter and cool in the summer while using minimal electricity. Electricity usage can be offset with optional solar panels. Good ventilation and careful finish material selections create a healthy indoor air quality. All these features combine to ensure that your ADU remains an asset for generations.



## FEATURES

- 465 Square Feet
- 1 Bedroom
- 1 Bath
- Vaulted Ceiling
- Walk-in Closet
- Front Porch
- Type B Accessible
- Solar Panel Ready
- Washer/Dryer and Dishwasher Hook-up
- Insulation Exceeds Energy Code
- Integrated Air Filtration System

## OPTIONS

- Type A Accessible
- Solar Panels
- Custom Space Saving Furniture
- Heat Pump
- 1 Car Garage

## PRICING

Confidential Quote and Site Assessment:



[inversiondesignbuild.com](https://inversiondesignbuild.com)

or email

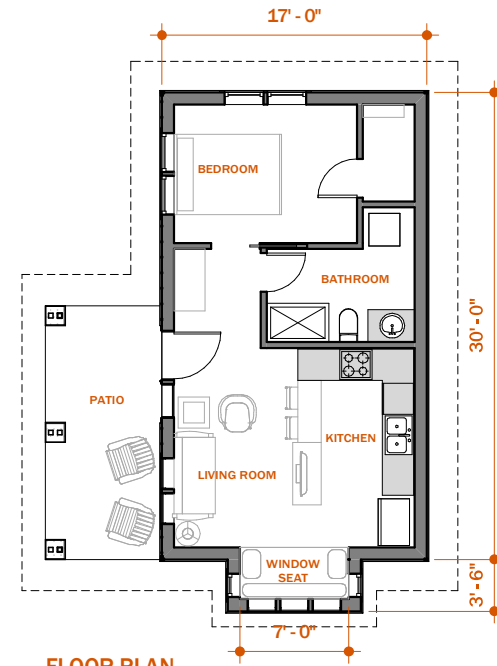
[info@inversiondesignbuild.com](mailto:info@inversiondesignbuild.com)

\* Price is for a standard unit on an owner occupied site

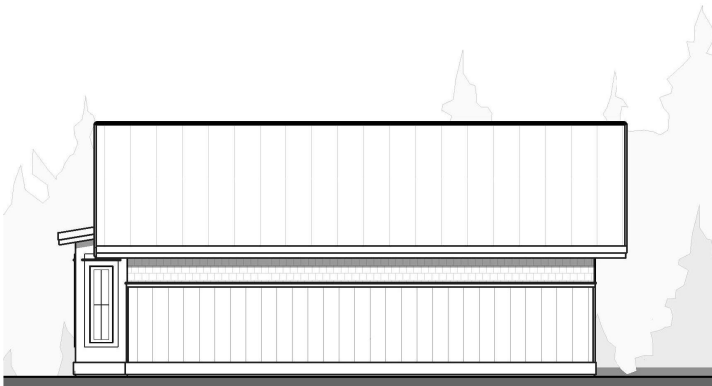
HARDY LUPINE  
1 BEDROOM



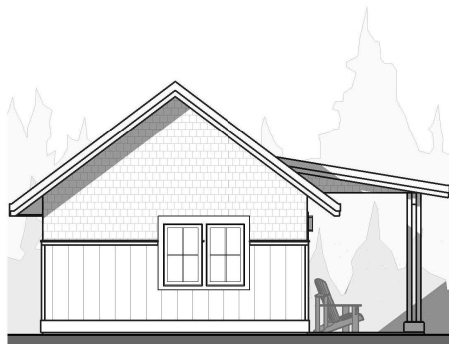
**LEFT SIDE**



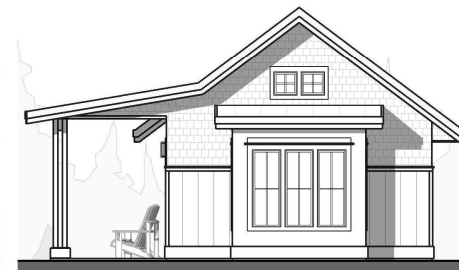
**FLOOR PLAN**



**RIGHT SIDE**



**BACK**



**FRONT**

# HARDY LUPINE 1 BEDROOM